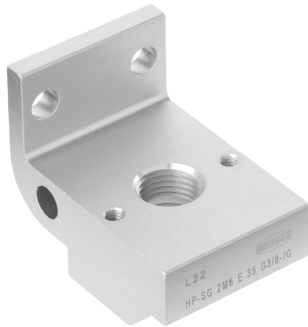
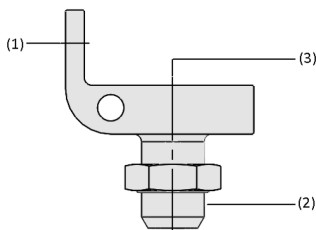


## Holders for Suction Cups HP-SG

Suction cup connection for suction cup nipples G1/4" and G3/8"



Holders for Suction Cups HP-SG



System Design Holders for Suction Cups HP-SG



### Suitability for Industry Specific Applications

#### Applications

- Flexible adjustable lightweight holder for dynamic processes in vacuum automation
- Design of lightweight suction spiders with Schmalz vacuum components
- Design of grippers with decentralized vacuum generation in combination with Schmalz ejector SEAC

#### Design

- Connection to profiles with T-slot (1)
- Connection for vacuum suction cups (2) and decentralized vacuum generators of type SEAC (3)
- Optional: connection for external vacuum generation (3) instead of vacuum generator SEAC

#### Product Highlights

- Lightweight aluminum design minimizes gripper weight and load limit
- Stable design for high dynamic load enables fast traversing speed
- Versatile use on standard slot profiles due to flexible connection via slot nut
- Saving of additional mounting material by connecting the vacuum supply line directly to the holder

# Holders for Suction Cups HP-SG

Suction cup connection for suction cup nipples G1/4" and G3/8"

## Designation Code Holders for Suction Cups HP-SG



### 1 – Abbreviated designation

Code	Version
HP-SG	Holder for suction cups

### 2 – Connection profile

Code	Connection
2M6	2 screws M6

### 3 – Design

Code	Type
E	Ejector connection

### 4 – Width

Code	Width in mm
35	35

### 5 – Connection suction cup

Code	Connection
G1/4-AG	G1/4-AG (AG = male (M))
G1/4-IG	G1/4-IG (IG = female (F))
G3/8-AG	G3/8-AG
G3/8-IG	G3/8-IG

The holders HT-SG for suction cups are supplied as a ready-to-connect product. The scope of delivery for the variants with external threads additionally includes lock nuts.

Available accessories: mounting set

## Ordering Data Holders for Suction Cups HP-SG

Type	Part no.
HP-SG 2M6 E 35 G1/4-AG	10.07.06.00712
HP-SG 2M6 E 35 G1/4-IG	10.07.06.00716
HP-SG 2M6 E 35 G3/8-AG	10.07.06.00715
HP-SG 2M6 E 35 G3/8-IG	10.07.06.00717

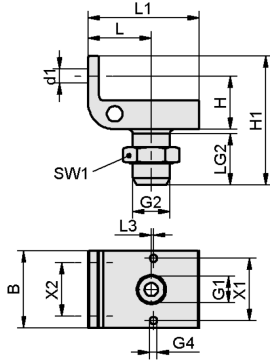
## Ordering Data Accessories Holders for Suction Cups HP-SG

Accessories	Part no.
Assembly set	SET HP-SG 2xM6 T 10.07.06.00739

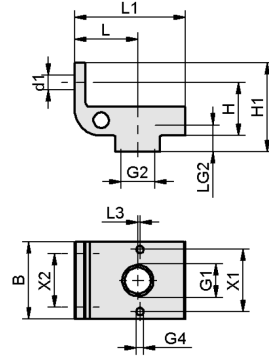
# Holders for Suction Cups HP-SG

Suction cup connection for suction cup nipples G1/4" and G3/8"

## Design Data Holders for Suction Cups HP-SG



HP-SG AG



HP-SG IG

## Holders for Suction Cups HP-SG

Suction cup connection for suction cup nipples G1/4" and G3/8"

### Design Data Holders for Suction Cups HP-SG

Type	B [mm]	d1 [mm]	G1	G2	G4	H [mm]	H1 [mm]	L [mm]	L1 [mm]	L3 [mm]	LG2 [mm]	SW1 [mm]	X1 [mm]	X2 [mm]
HP-SG 2M6 E 35 G1/4- AG	35	6.4	G1/4"-F	G1/4"-M	M4-F	24	58.0	28.5	50	1	22	17	28	24
HP-SG 2M6 E 35 G1/4- IG	35	6.4	G1/4"-F	G1/4"-F	M4-F	24	40.2	28.5	50	1	21	-	28	24
HP-SG 2M6 E 35 G3/8- AG	35	6.4	G1/4"-F	G3/8"-M	M4-F	24	58.0	28.5	50	1	22	22	28	24
HP-SG 2M6 E 35 G3/8- IG	35	6.4	G1/4"-F	G3/8"-F	M4-F	24	40.2	28.5	50	1	10	-	28	24